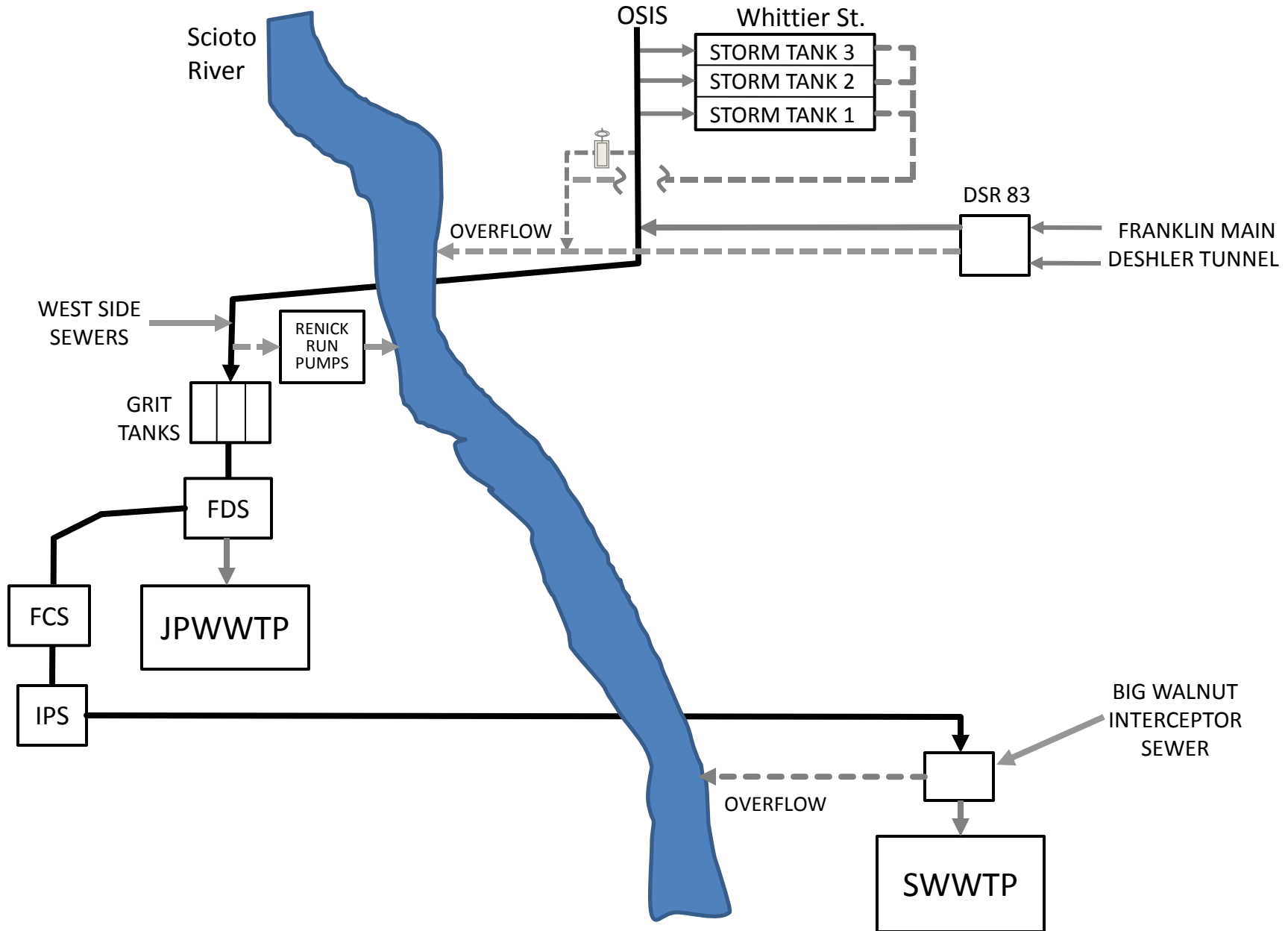


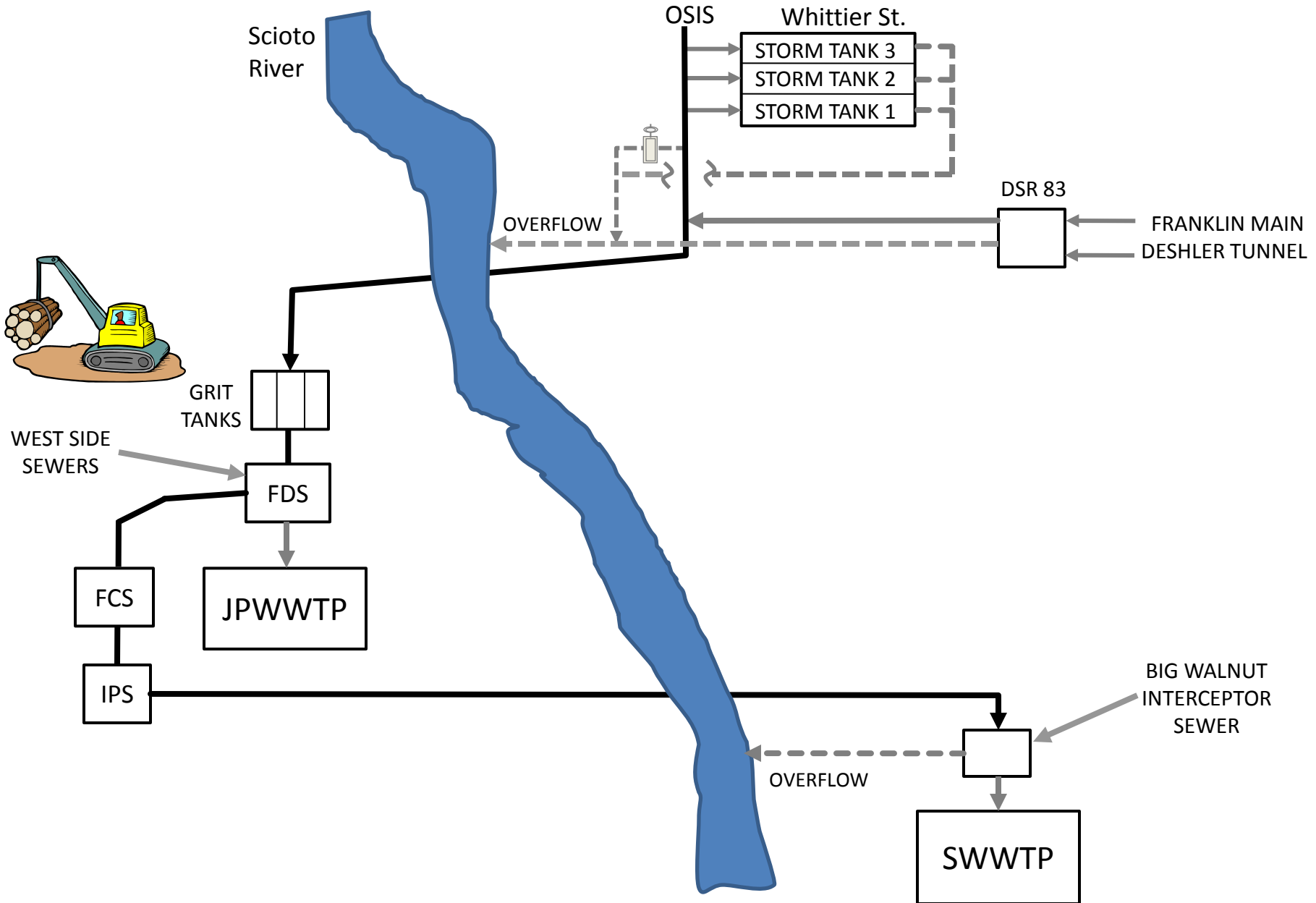
Columbus DSR83 Weir Raise Project

**Gary Hickman
Jackson Pike Plant Manager
City of Columbus**

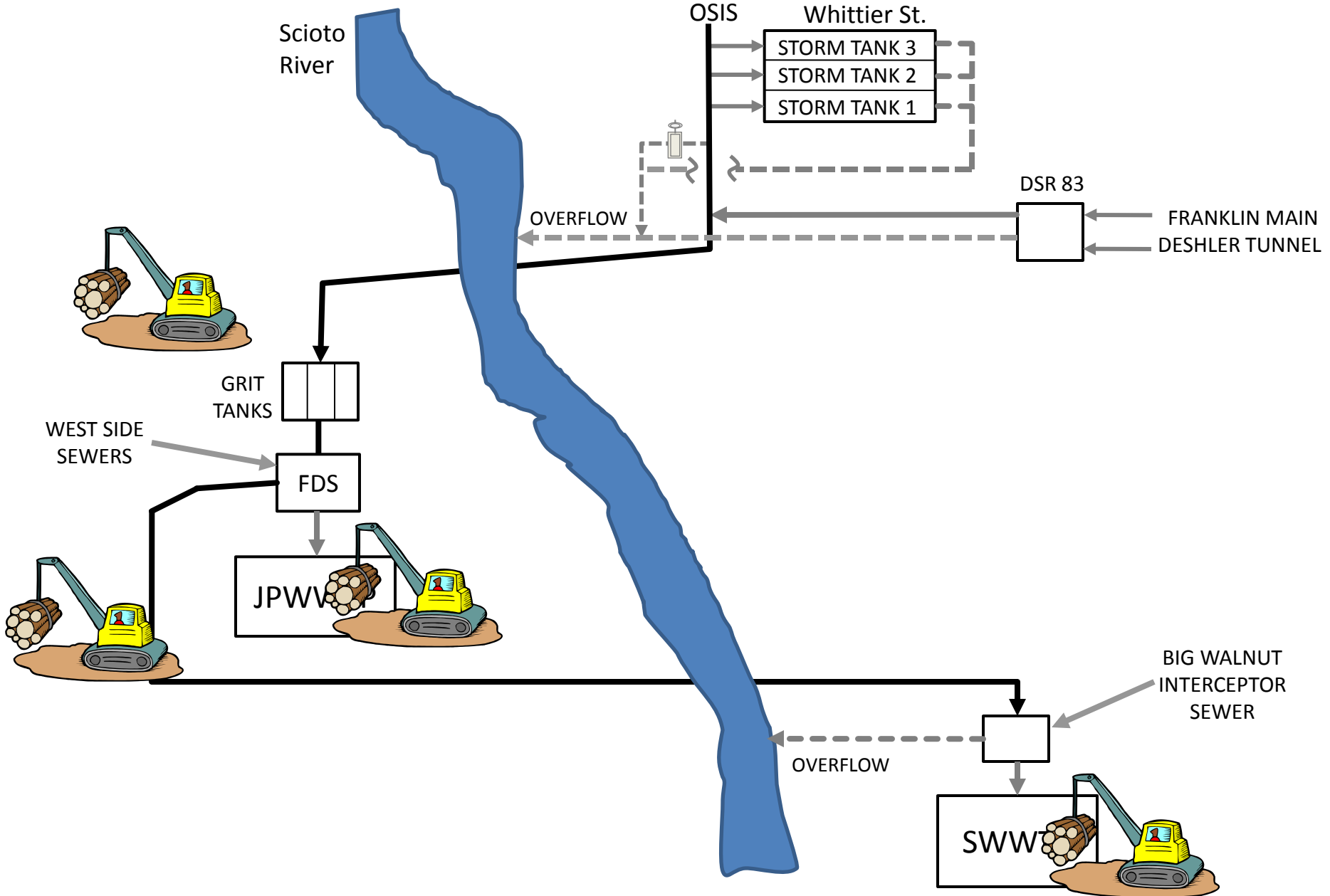
Before System Improvements



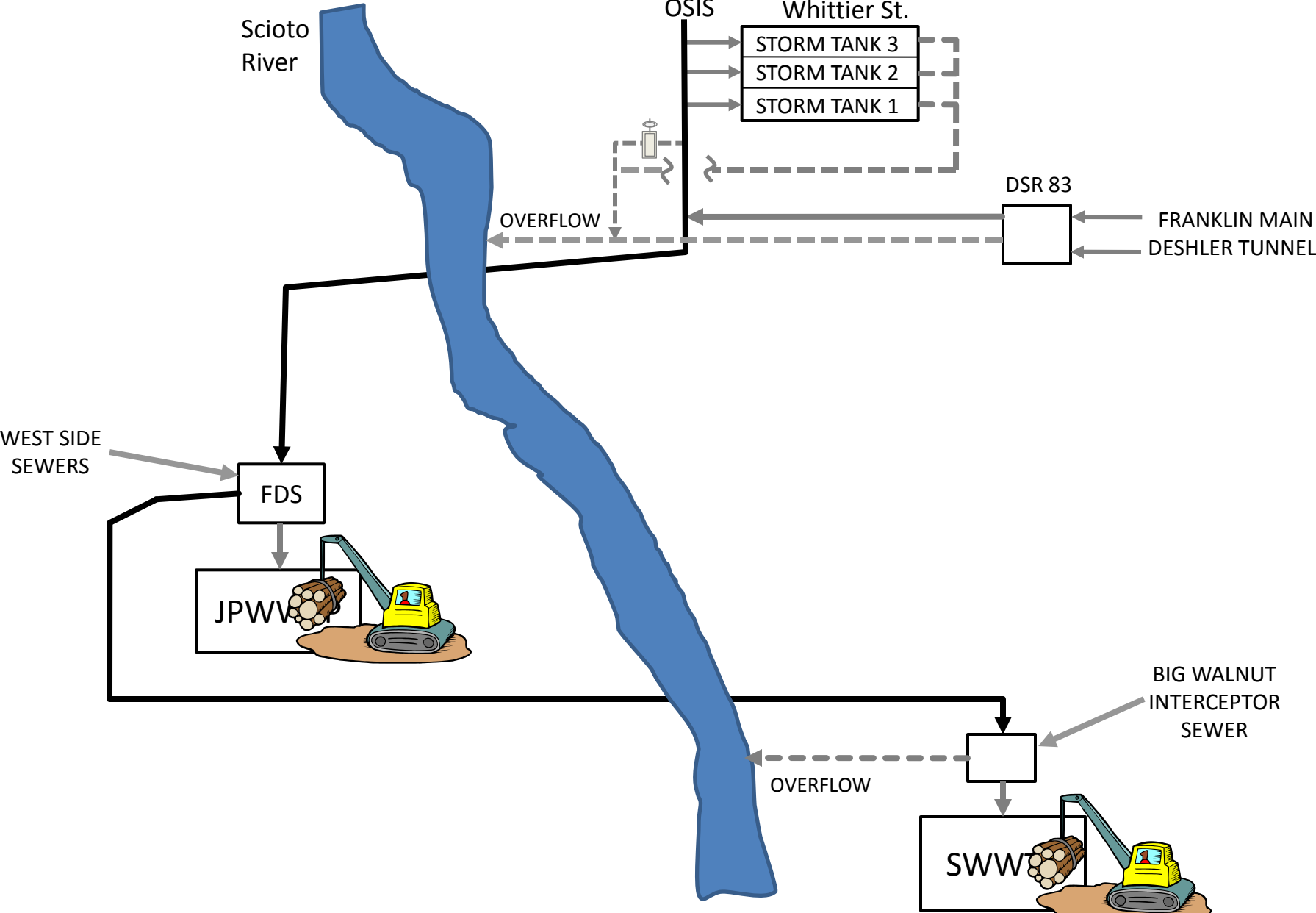
Collection System Improvements



Collection System Improvements



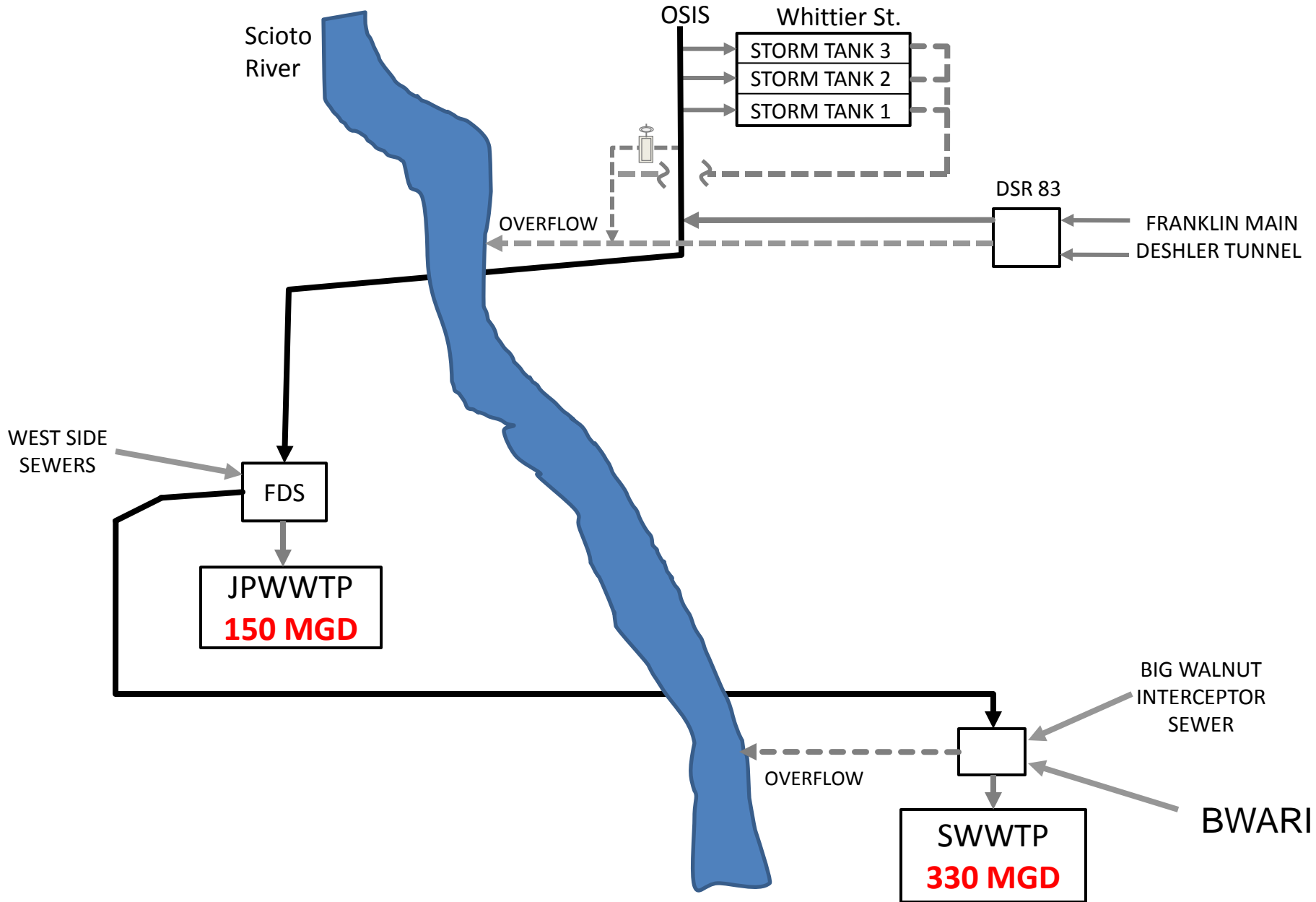
Collection System Improvements



Berliner Park Grit Tank Removal

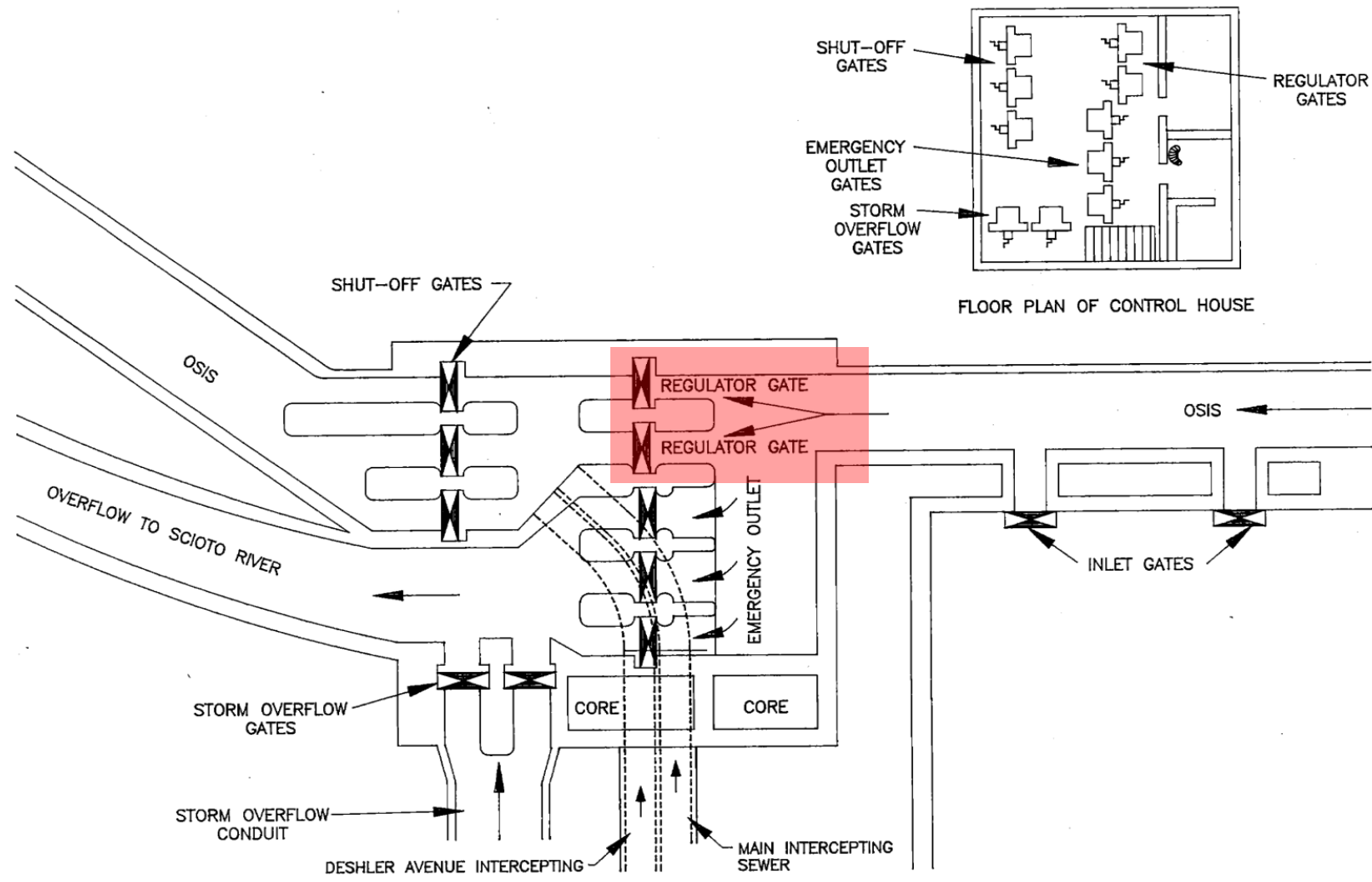


Plant Capacity Improvements

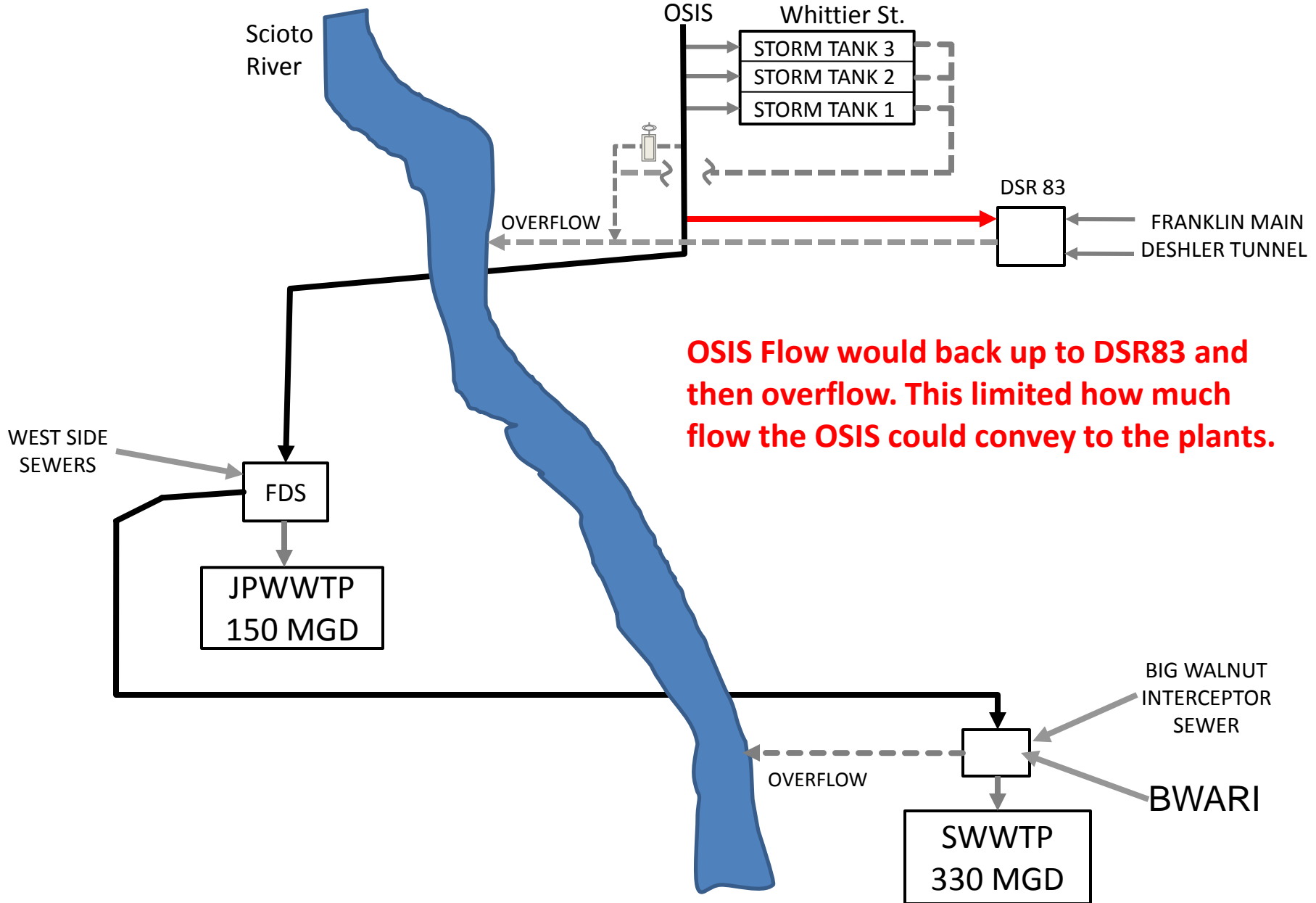


Whittier Street Control House

WHITTIER STREET STORM STANDBY TANKS
OVERVIEW OF GATES



New System Limitation



DSR83 Location



DSR83 Temporary Weir Raise

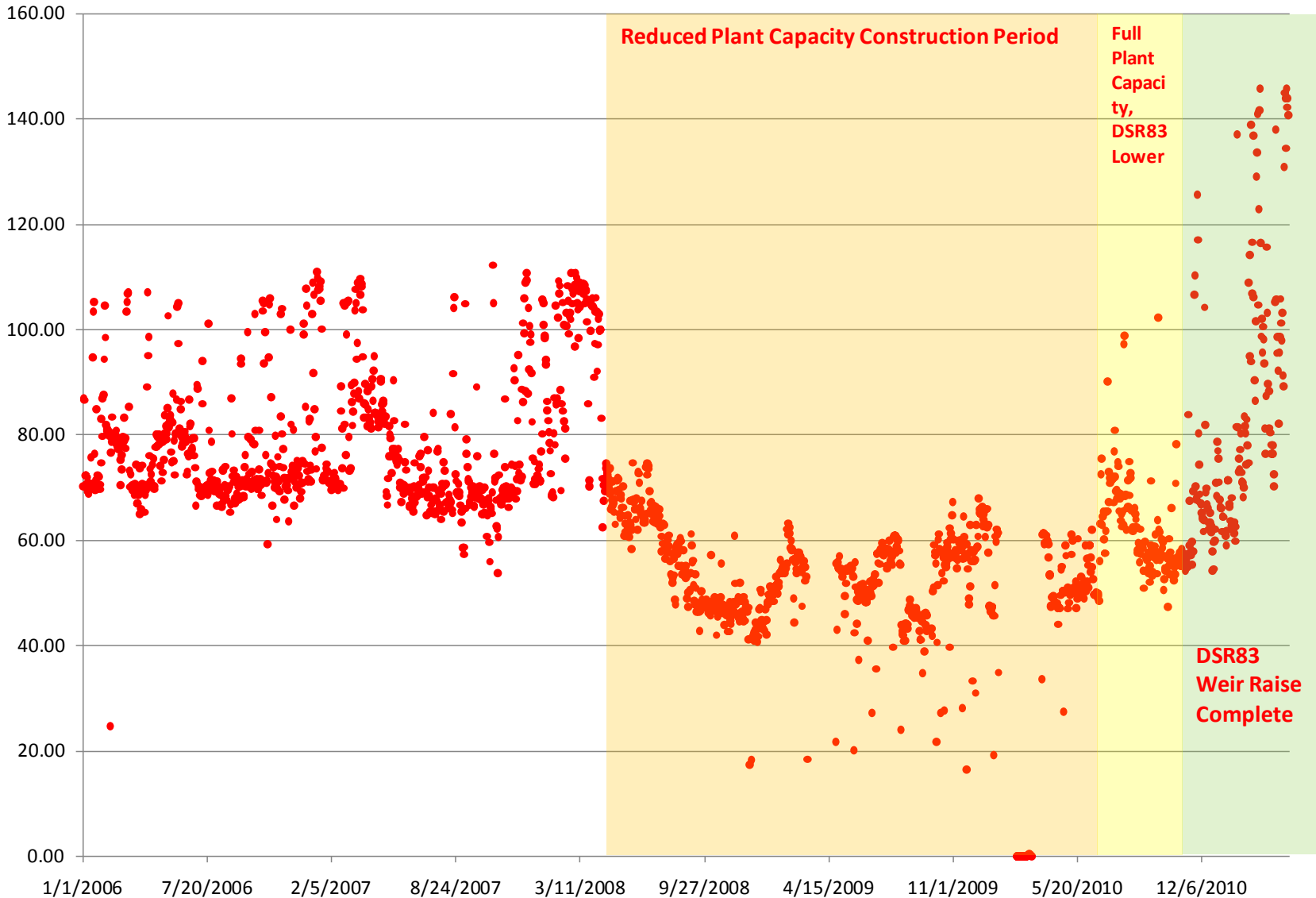


DSR83 Temporary Weir Raise Effects

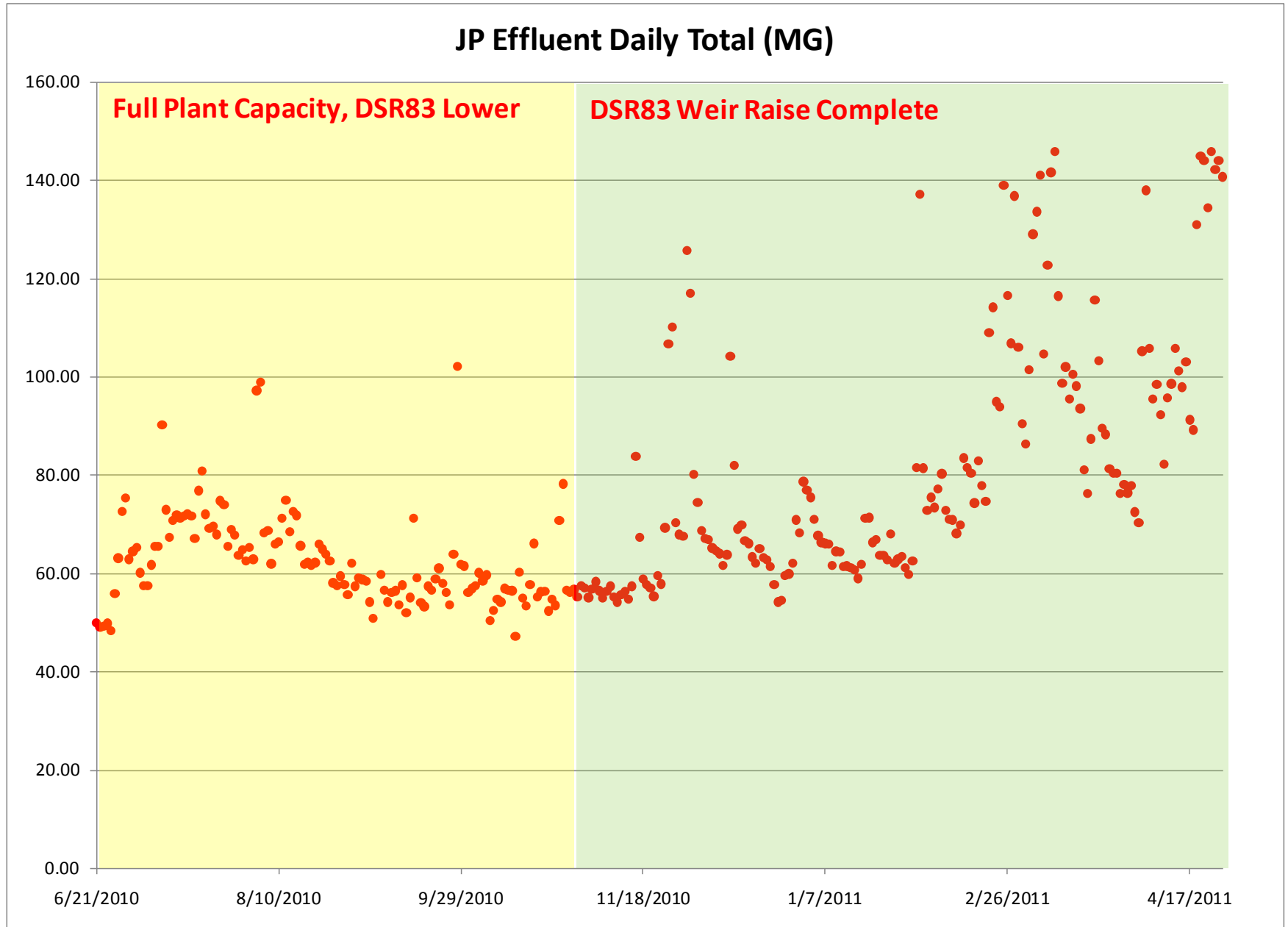
- Upstream regulator gates could be opened from about 45% to 70% during storm events
- Higher plant influent flows were noticed
- Manage sewer elevation for Berliner Park protection also

DSR83 Temporary Weir Raise Effects

JP Effluent Daily Total (MG)

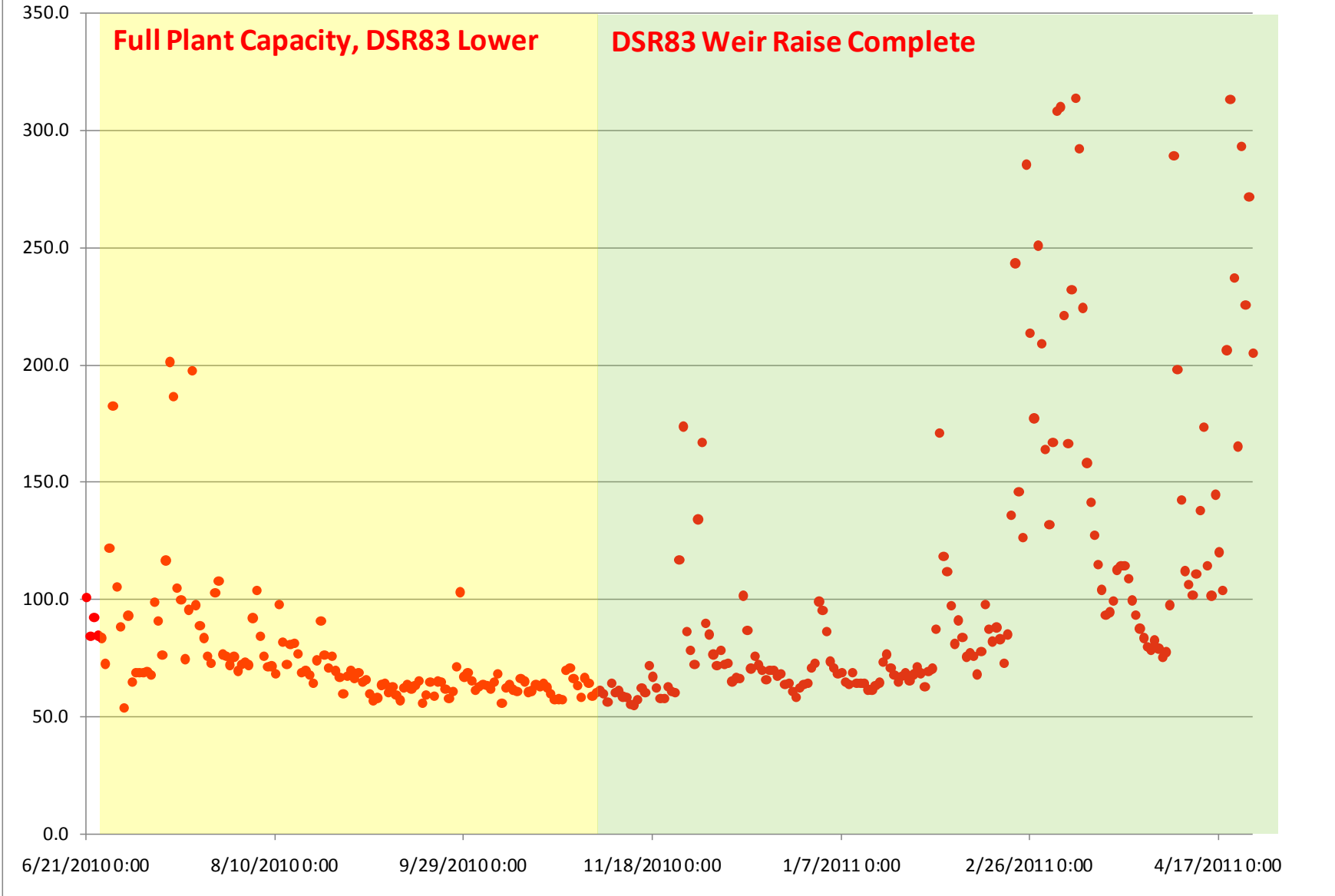


DSR83 Temporary Weir Raise Effects

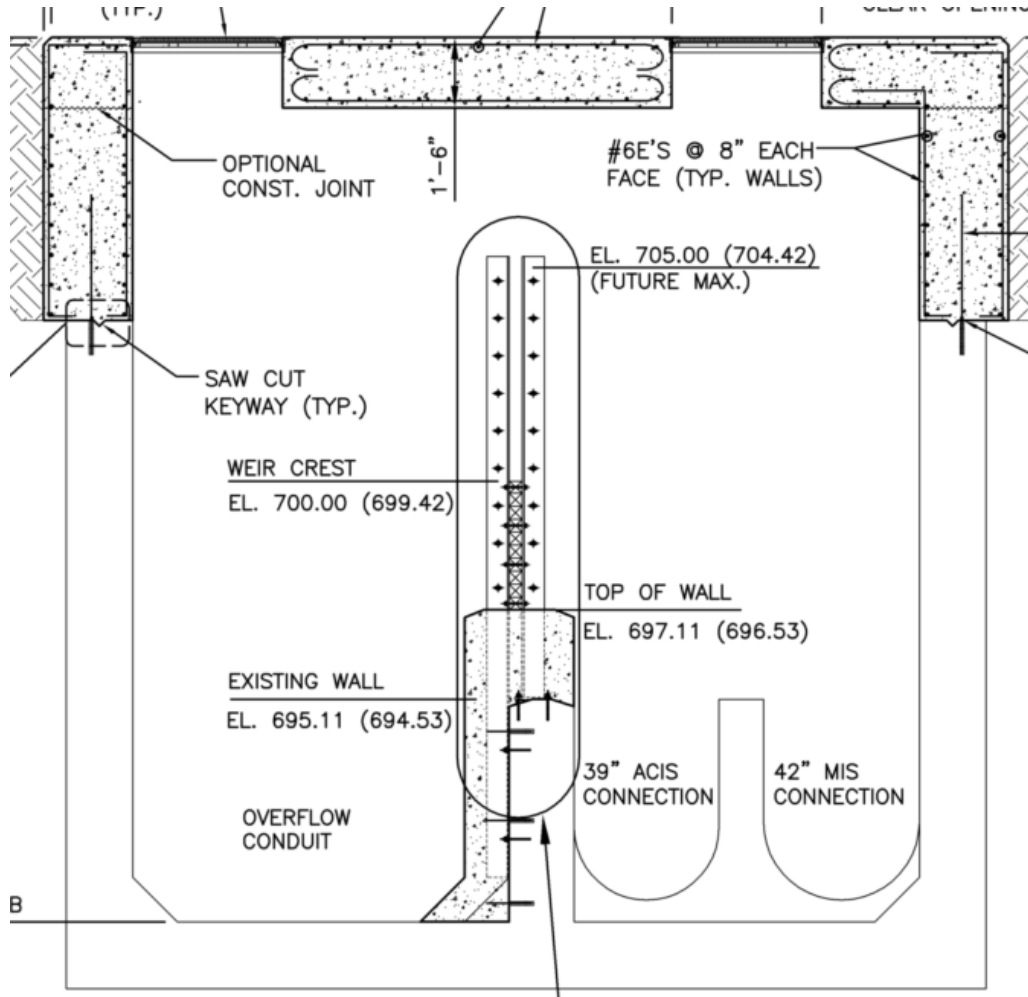


DSR83 Temporary Weir Raise Effects

Southerly Effluent Daily Total (MG)



DSR83 Future Improvements

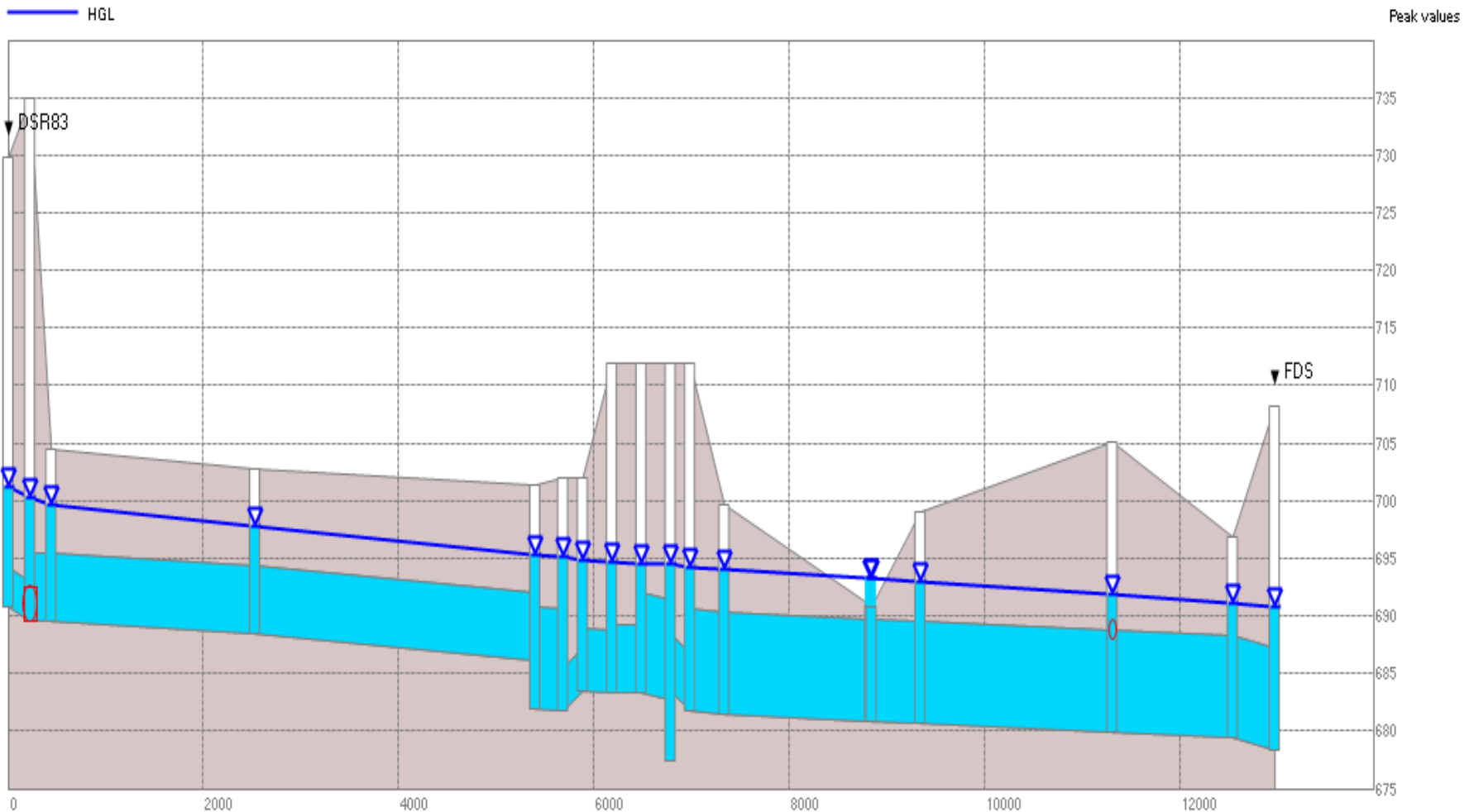


Increase DSR83 Weir elevation to increase flow capacity of OSIS

DSR83 Improvements Construction



DSR83 Weir Raise Effects

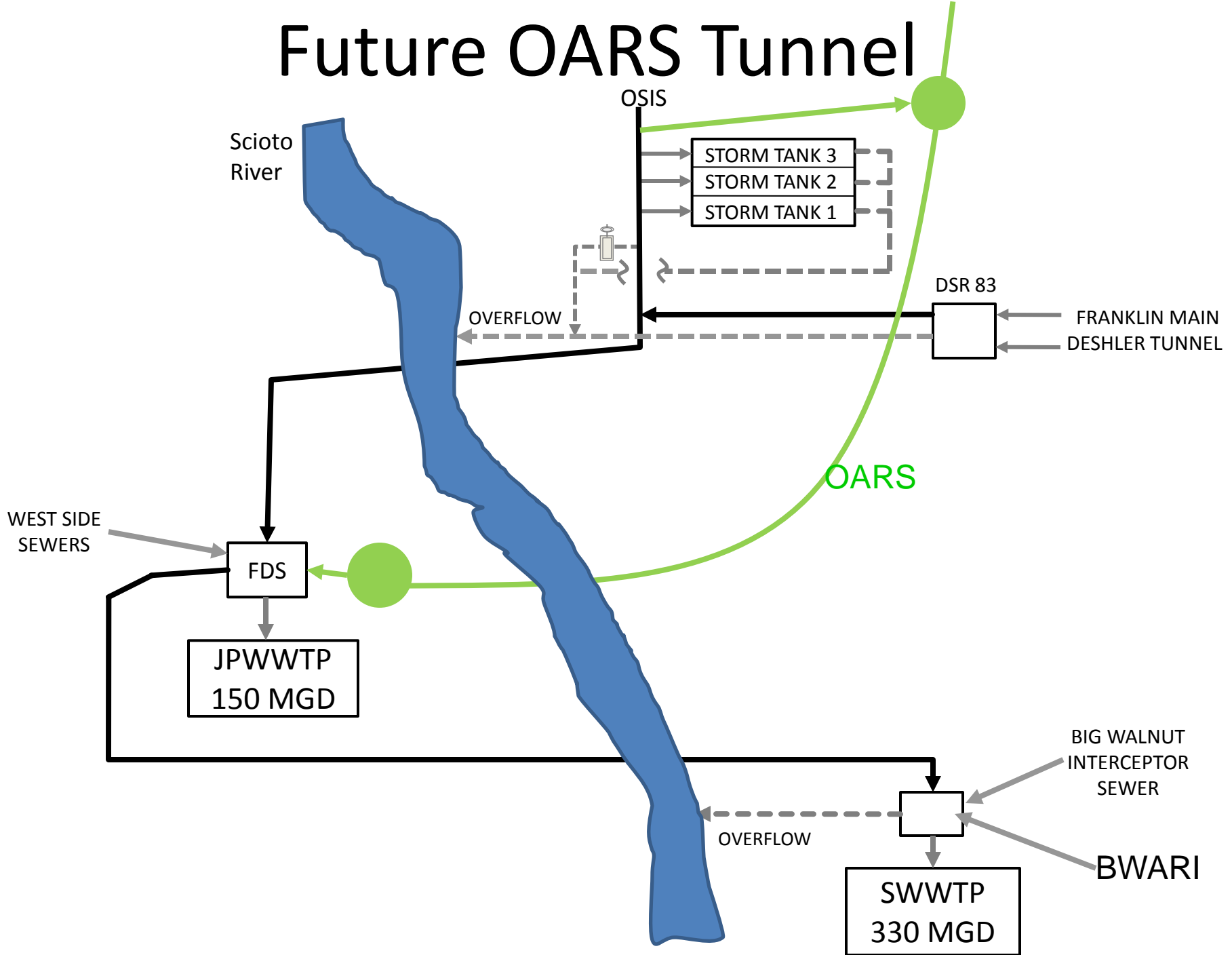


Modeled water surface profile, OSIS from DSR 83 at 702' to FDS

Other Future System Improvements

- OSIS monitoring at Berliner Park for closer control of level
- OARS tunnel and pump station for increased conveyance
- Continual refinement to the wet weather operational strategy

Future OARS Tunnel



Future OARS Tunnel Construction



**Any
Questions?**

